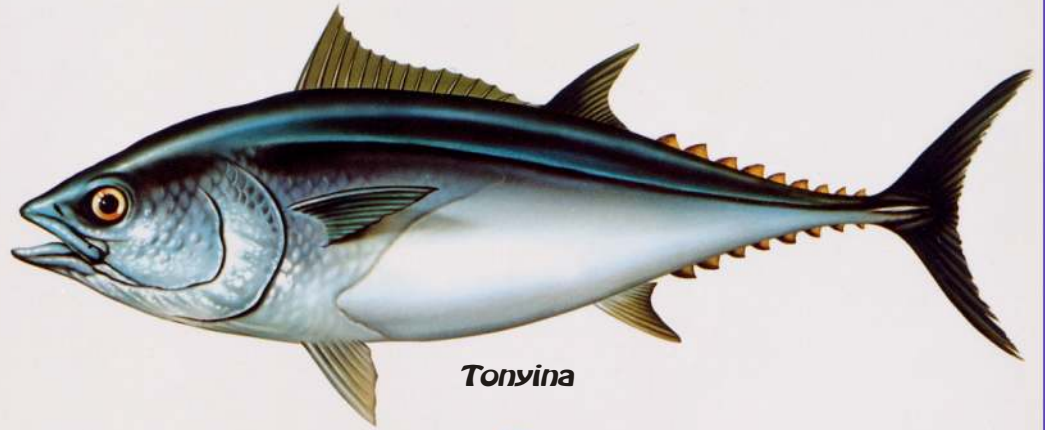


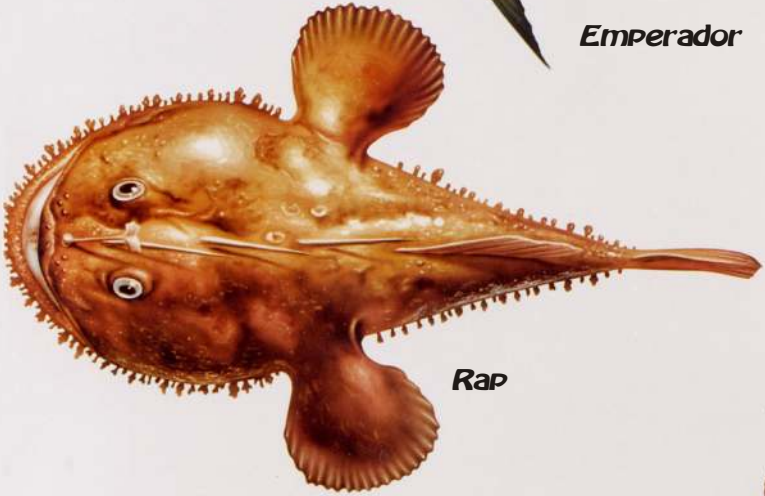
Peixos comercials de Catalunya



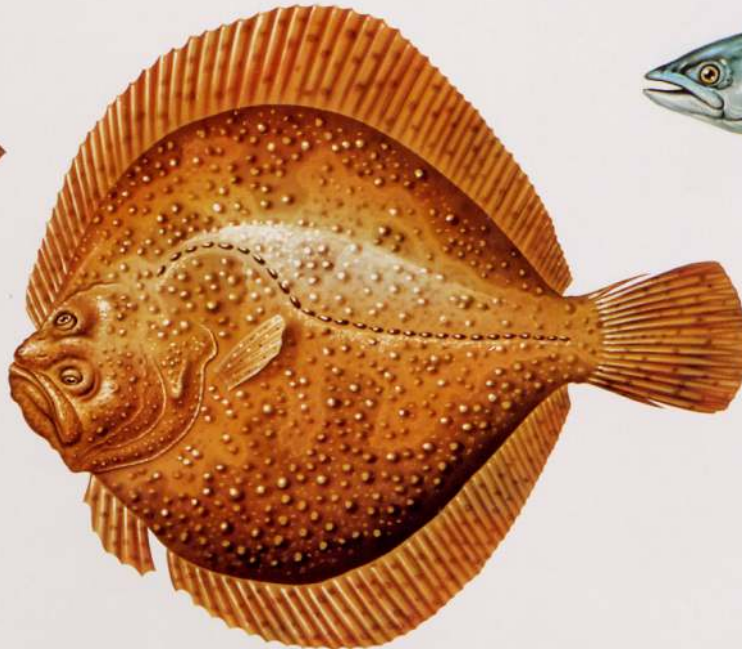
Emperador



Tonyina



Rap



Rèmol empetxinat



Bonifol



Verat



Anguila



Congre



Lenguado



Gall



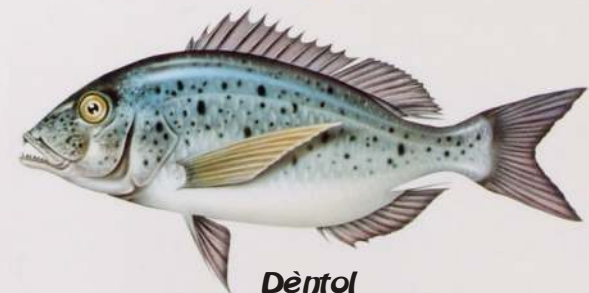
Nero



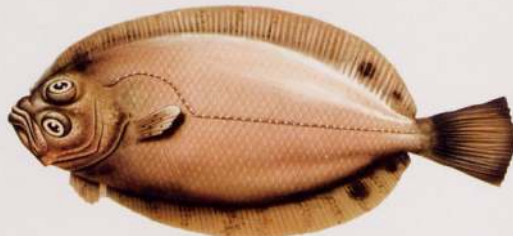
Palaia



Llobarro



Dèntol



Bruixa



Lluç



Sarg



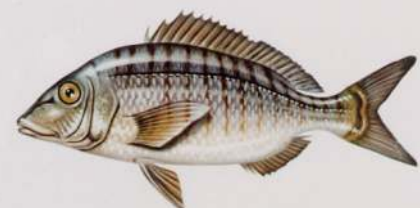
Pagell



Lluerna



Maire



Mabre



Moll roquer



Penegal



Cirvia



Orada



Bròtola



Cap roig



Sardina



Seitó



Generalitat de Catalunya
Departament d'Agricultura,
Ramaderia i Pesca
Direcció General de Pesca
i Afers Marítims